

Alpine Space  
Forum  
Innsbruck  
2011 22-23  
February 2011



# Alpine Space Forum



Coping with Demographic Change –  
Shaping policies

*Session 1 Economic Centers & Peripheries*

## CAPACities: Exploiting the Hidden Potential

Luisa Pedrazzini  
*Regione Lombardia*  
*Lead partner*

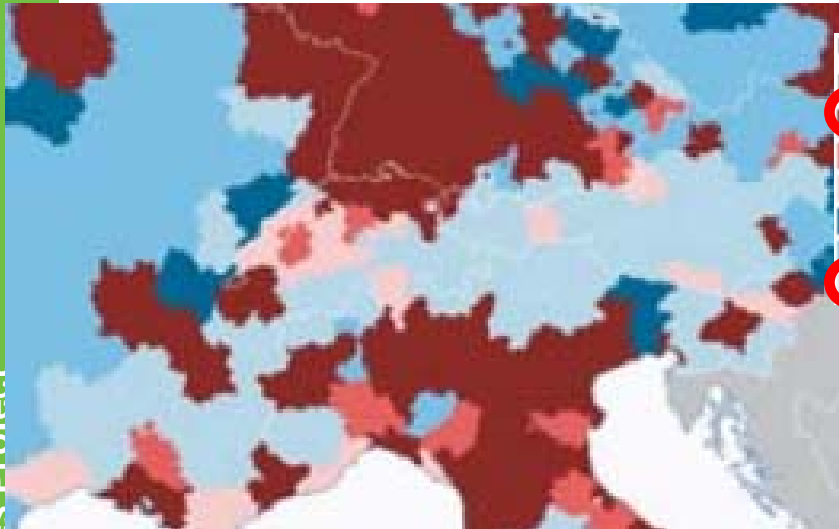


RegioneLombardia



# A preliminary note: a unique situation

CAPACities Project  
ns at

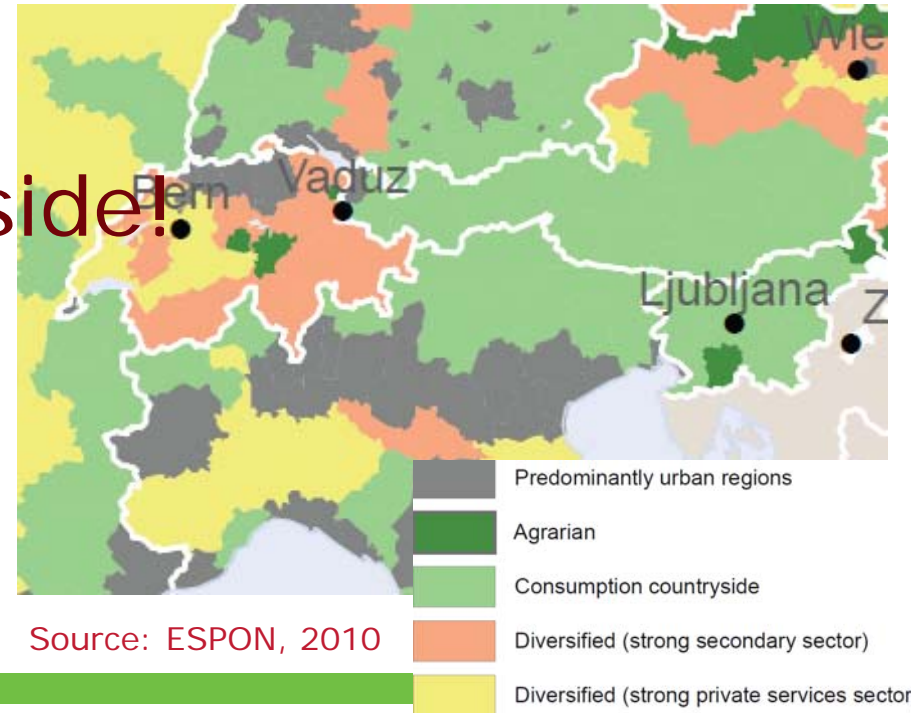
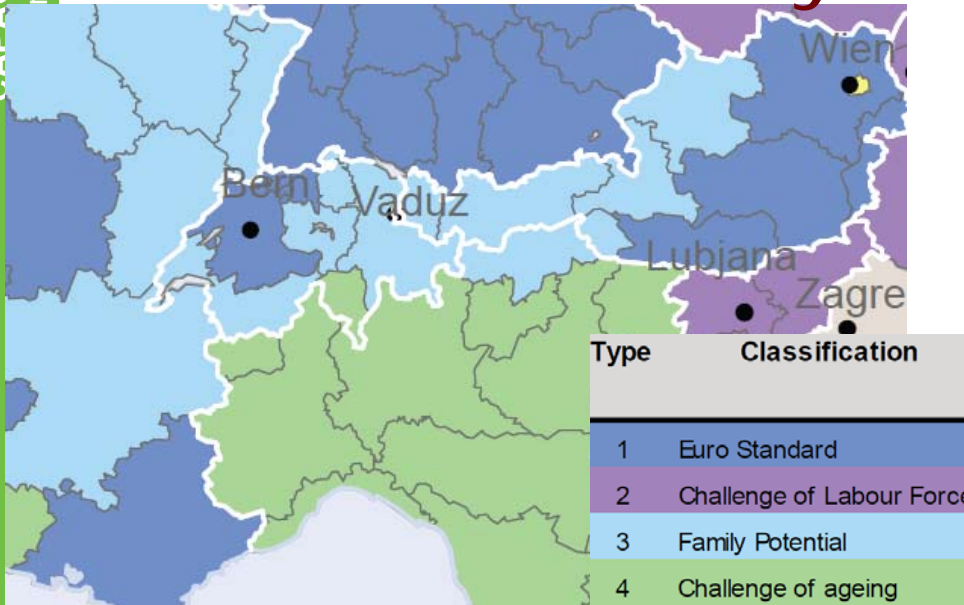


Urban-rural typology, based on population density, FUA ranking and land cover

Source: ESPON, 2006 Urban Rural Relations

- High urban influence, high human intervention
- High urban influence, medium human intervention
- High urban influence, low human intervention
- Low urban influence, high human intervention
- Low urban influence, medium human intervention
- Low urban influence, low human intervention

Diversity inside!



Source: ESPON, 2010



# Aims of CAPACities

A **place based, trans-sectoral** approach for a Region composed by a **complex mosaic of identities**

- fit out Alpine Space Small Local Urban Centres (AS-SLUCs) to pursue the Lisbon strategy in a territorial perspective, promoting innovative urban policies and actions;
- promote integrated spatial strategies for durable development and enhancement of small towns in a global context (by using tools and resources in a integrated and complementary way);
- strengthen relations amongst AS-SLUCs in order to improve attractiveness and competitiveness also in the light of improved relations with the MEGAs

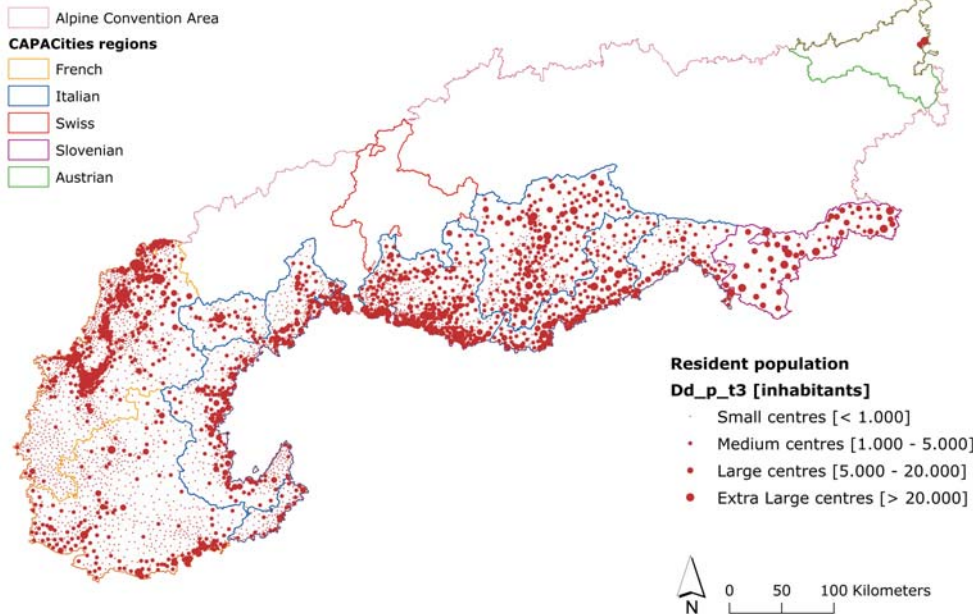


Regione Lombardia

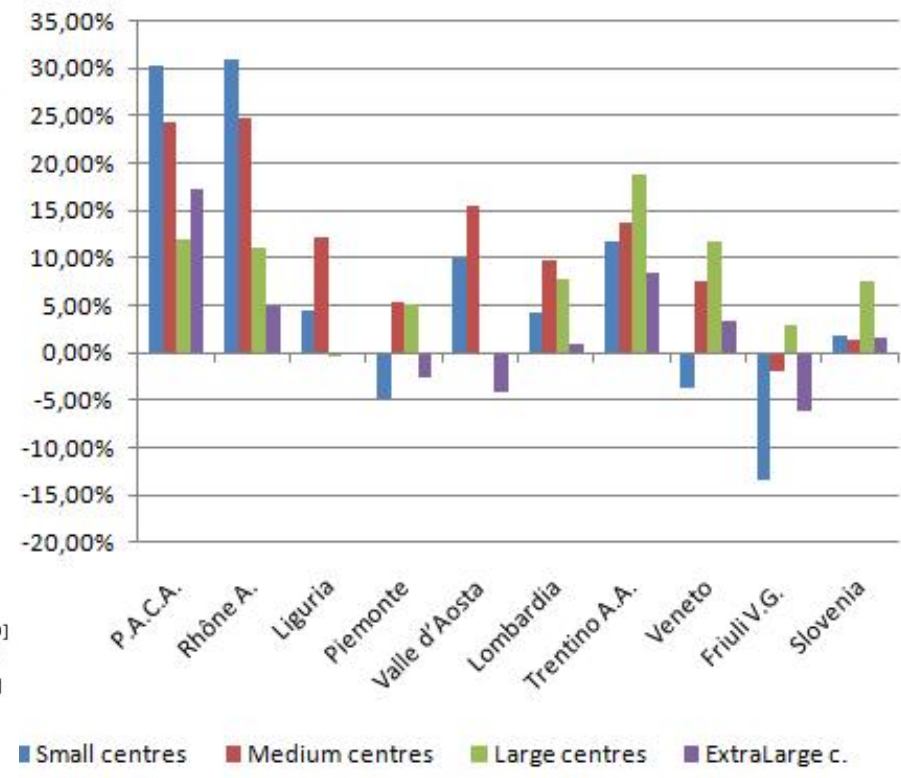


# Demographic changes: some data from CAPACities

- The mosaic of the ALPS: inside a “homogeneous” region, **different trends** are present
- the **population growth rate** shows that inhabitants grow in French, Italian and Slovenian Alps but with different trend:

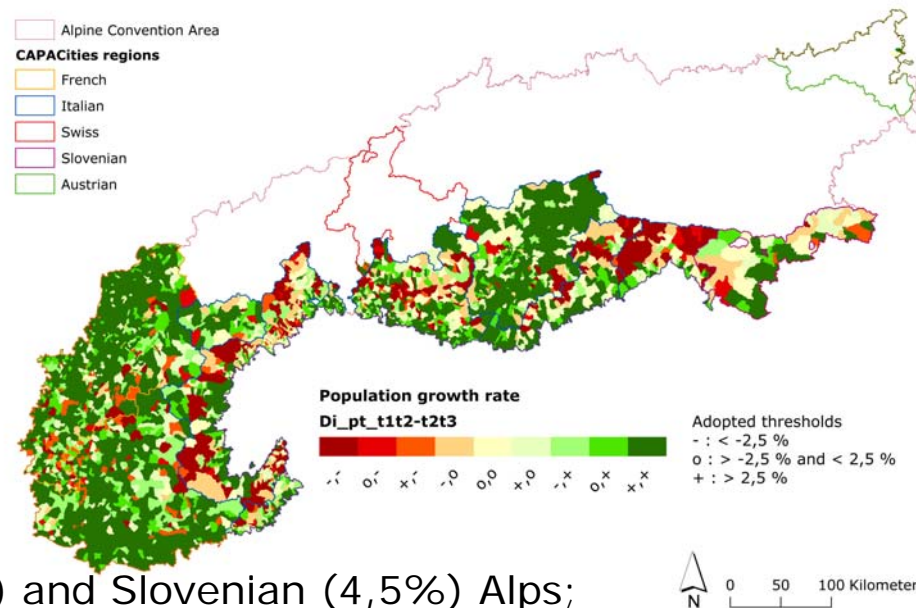
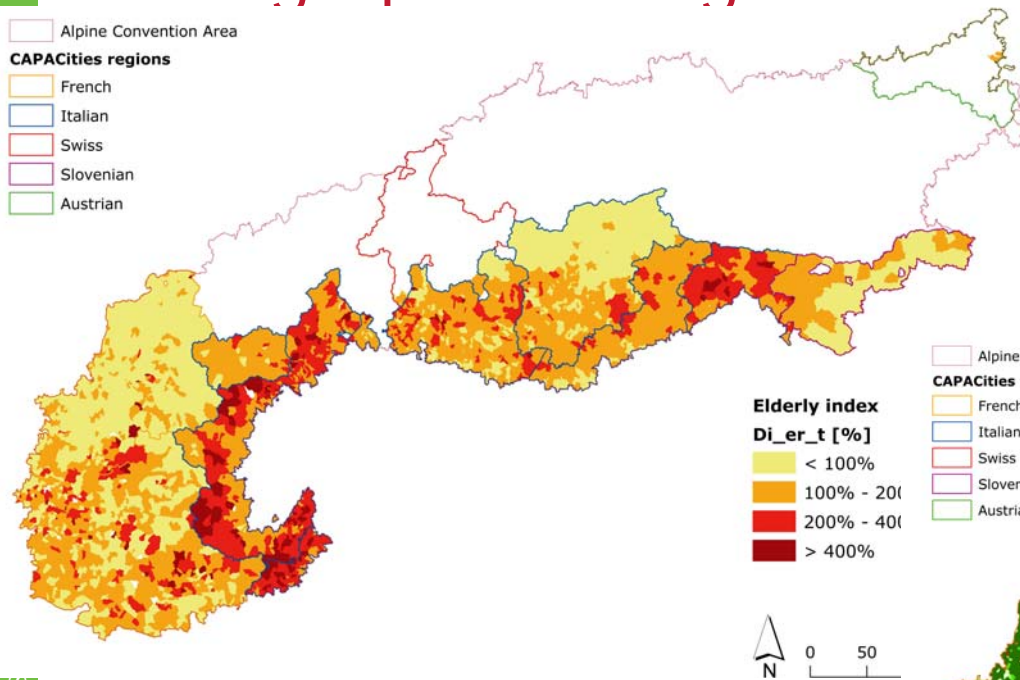


**Growth rate in Capacities area per region T1 - T3**





# Demographic changes: some data from CAPACities



- French Alps grow more than Italian (5%) and Slovenian (4,5%) Alps;
- French regions grow both in the inner areas and on the border;
- Decreasing in population in Piemonte, Liguria Lombardia, Veneto and Friuli Venezia Giulia (in the inner parts), while Valle d'Aosta and Trentino Alto Adige show positive trend in population



Regione Lombardia

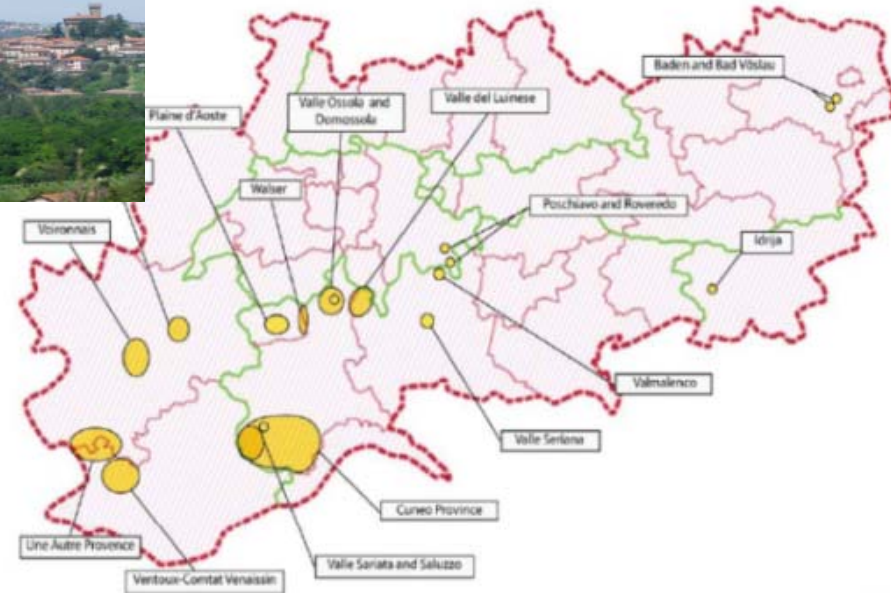


# Key questions

1. Alpine area is highly fragmented in small and medium centres, which have in charge the main planning and administrative functions, in fact about 84% of municipalities belonging to **CAPACities** area have a population of less than 5,000.
2. Regional administrative policies can have a strong influence on demographic and economic dynamics: some regions present completely different trends despite their common or similar demographic size, morphology, landscape and culture.
3. Abandonment of traditional economic activities (agricultural, industrial) and a monocultural trend to tourism, create large depressed areas inside Alps
4. Access to knowledge, telecommunication, a better mobility and to services of general interest are needed for increase conditions to improve attractiveness and competitiveness of little towns in inner Alps.



# 16 CAPACities' Pilot Actions



Regione Lombardia



# Typology of tools

- the development of innovative actions and tools in town and country planning, promoting the participation of women, youth, aged people to territorial development policies;
- the creation of integrated strategic Local and Regional Plans to improve the quality of life and the competitiveness of Alpine Centers;
- Pilot Projects to exploit Alpine resources related to cultural, environmental, landscape tourism and local economy assets





# Innovative actions

## key words

1. Shaping **innovative strategies** are crucial to keep the Alps attractive, primarily for those who choose to live and invest there.
2. The majority of tools proposed by the **CAPACities** partners are '**multisectoral**' (do not fit into one single category of action).
3. Administrative and **demographic size** is a crucial issue in many mountain regions. Local authorities should cooperate in order to build up **aggregations** of local systems in order to successfully face many challenges, including social inclusion.
4. Through **cooperation** local communities can successfully face widespread problems and find appropriate solutions. Cooperation should be seen as a starting point for new projects and for a renewed Alpine identity, based on local resources and people, which are the primary, real assets to reinforce the competitiveness of Alpine towns.



Regione Lombardia





The Alpine Space is characterized by medium and small towns. They represent the territorial capital of this area for richness in natural resources, landscape quality and historical importance but they are also a weakness for economic development due to their isolation, depopulation and difficulty in connections and facilities supply.



language Selection



Search

Search

GO

CAPACities project has been approved within the first call of the INTERREG IVC Alpine Space Programme, under Priority I - Competitiveness and Attractiveness.

It aims at promoting the potential of medium and small towns through an integrated and transnational approach by innovative urban policies and actions, and by creating alliances with the neighboring MSAs and strong territories. The expected result is a new approach to territorial development capable to integrate different issues (multifunctional urban uses, environment and culture, tourism) in spatial development strategies. The project will create operative tools and specific gender policies (women, youth and aged people) to promote innovative urban activities, pursuing the Lisbon strategy applied at local territorial level.

To make these tools operative and concrete, the project foresees their testing on pilot areas selected by partners and a final assessment and evaluation of results that will be reported and made available for policy makers and other stakeholders involved in the project.

Partners



- 1 Lombardy Region (IT)
- 2 DI Herbert Licka - Engineering Consultant (AT)

News/Events

Work in progress



Regione Lombardia

