

investing in your future



Greetings from the  
Alpine Space Programme

**ALIAS**



The programme is co-funded  
by the European Regional  
Development Fund

# ALIAS

Hospitals in mountain areas serve not only the local residents but also a high number of tourists, especially in the peak season. The varying demand for medical services, along with the problem of language barriers, present significant challenges to the healthcare structures in the Alpine Space.

ALIAS has created a virtual network to facilitate the cooperation between hospitals. The project established a platform offering telemedicine, secure clinical data sharing and the exchange of best practice. This has helped to improve the efficiency and quality of medical treatments regardless of the location of the patients.

## Key achievements

- + Virtual Hospital Network (VHN) involving 12 hospitals in six countries
- + Possibility for second opinions from experts in other hospitals
- + Videoconferencing, translations, eLearning and high definition medical image viewer tools

**EU support (ERDF)** ..... of over € 1,914,000

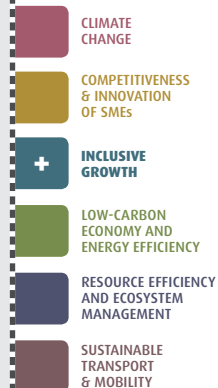
**Duration** ..... 08.2009 - 10.2012

## Alpine Hospitals Networking for Improved Access to Telemedicine Services

### Partners

Regione Lombardia .....	IT
Landeskrankenhaus Villach .....	AT
Hôpitaux Universitaires de Genève .....	CH
République et Canton Genève .....	CH
Klinikum Garmisch-Partenkirchen GmbH .....	DE
Groupement de Coopération Sanitaire – Système d’Information de Santé en Rhône-Alpes .....	FR
Institut National des Sciences Appliquées de Lyon .....	FR
Regione Autonoma Friuli Venezia Giulia .....	IT
Bolnišnica Golnik - Klinični oddelek za pljučne bolezni in alergijo Golnik .....	SI
Splošna bolnišnica Izola .....	SI

[www.alpine-space.eu/alias](http://www.alpine-space.eu/alias)



EUROPEAN TERRITORIAL COOPERATION



investing in your future



Greetings from the  
**Alpine Space Programme**

**AlpCheck 2**



The programme is co-funded  
by the European Regional  
Development Fund

# AlpCheck 2

The sharp increase in road traffic volumes observed in the last few decades, calls for integrated territorial strategies aimed at improving traffic efficiency and favouring a modal shift, whilst at the same time exploiting the potentials of ICT. AlpCheck2 responded to these challenges by proposing innovative solutions to the provision of traffic monitoring and management services. The project developed, tested and evaluated specific methods and tools for enhancing road transport efficiency, competitiveness and sustainability. It now provides free on-line access to a vast set of traffic data combined with future traffic scenarios and environmental data, which are ready to use for traffic monitoring and management.

## Key achievements

- + Transport Decision Support System (with 2 components: transportation planning and traffic management) and 17 traffic scenarios.
- + 1 platform for an on-line freight stock market
- + 1 methodology for evaluating modal shift policies

**EU support (ERDF)** ..... of over € 2,391,000

**Duration** ..... 09.2009 - 07.2012

## A shared rationale approach towards sustainable transport management and planning in the Alpine regions

### Partners

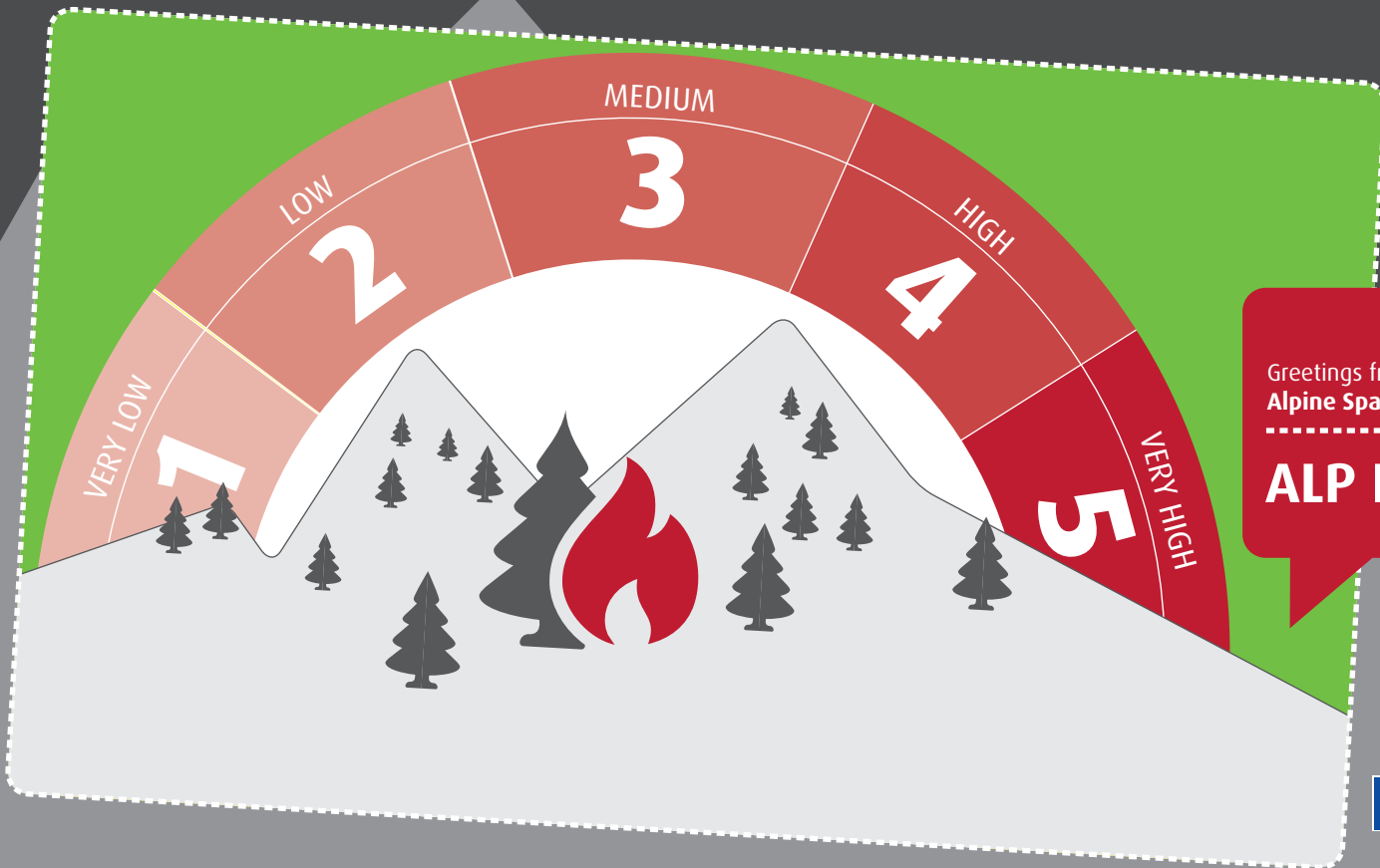
Regione del Veneto .....	IT
Amt der Kärntner Landesregierung .....	AT
Oberste Baubehörde im Bayerischen Staatsministerium des Innern .....	DE
TCI Röhling - Transport Consulting International .....	DE
Centre d'Etudes Techniques de l'Equipement, CETE Mediterranée .....	FR
Autorità Portuale di Venezia .....	IT
Ente Regionale per i Servizi all'Agricoltura e alle Foreste - ERSAF Lombardia .....	IT
Ministero dell'Ambiente, della Tutela del Territorio e del Mare .....	IT
Regione Autonoma Valle d'Aosta .....	IT
Republika Slovenija, Ministrstvo za promet, Direkcija Republike Slovenije za ceste .....	SI

[www.alpine-space.eu/alpcheck2](http://www.alpine-space.eu/alpcheck2)



EUROPEAN TERRITORIAL COOPERATION





Greetings from the  
**Alpine Space Programme**

---

**ALP FFIRS**



The programme is co-funded  
by the European Regional  
Development Fund

# ALP FFIRS

## Alpine Forest Fire Warning System

As forests represent a substantial percentage of the Alpine Space, common solutions were needed to reduce the impact of forest fires on the Alpine environment.

ALP FFIRS developed the Alpine Forest Fire Danger Scale. This common and harmonised tool is equipped with a warning system that issues a daily alert level bulletin for the Alpine Space. Focusing on prevention and mitigation actions, the project has also increased awareness amongst the general public and the partners have organised transnational and cross-border exercises, for all those involved in fire prevention and fire suppression.

### Key achievements

- + Recommendations on forest fire for policy-makers
- + Alpine Forest Fire Danger Scale and common warning system
- + 4 transnational and transregional mutual aid protocols

EU support (ERDF) ..... of over € 2,074,000

Duration ..... 09.2009 - 10.2012

### Partners

Agenzia Regionale per la Protezione Ambientale del Piemonte .....	IT
Universität für Bodenkultur Wien .....	AT
Zentralanstalt für Meteorologie und Geodynamik .....	AT
Federazione cantonale ticinese dei corpi pompieri .....	CH
Eidgenössische Forschungsanstalt für Wald, Schnee und Landschaft, WSL .....	CH
Sezione forestale cantonale, Cantone Ticino .....	CH
Technische Universität München .....	DE
Entente pour la forêt Méditerranéenne – CEREN .....	FR
Ente Regionale per i Servizi all'Agricoltura e alle Foreste - ERSAF Lombardia .....	IT
Regione Autonoma Friuli Venezia Giulia .....	IT
Regione Autonoma Valle d'Aosta .....	IT
Regione del Veneto .....	IT
Regione Piemonte .....	IT
Gozdarski inštitut Slovenije .....	SI

[www.alpine-space.eu/alpffirs](http://www.alpine-space.eu/alpffirs)



investing in your future



Greetings from the  
**Alpine Space Programme**

**AlpHouse**



The programme is co-funded  
by the European Regional  
Development Fund

# AlpHouse

The Alpine Space is shaped by unique settlement structures, which are key to its attractiveness. However, the traditional architecture is being threatened by negligence and urban sprawl.

AlpHouse tackled three challenges in one: energy efficiency, cultural heritage and competitiveness of SMEs. The project explored the principles of Alpine architecture and combined these with top level and energy efficient renovation techniques. Using local materials and employing local SMEs, AlpHouse has strengthened the market for energy efficient and style appropriate renovation.

## Key achievements

- + Training for craftsmen, architects, planners and decision-makers (36 training modules reaching almost 600 participants)
- + Pilot construction sites in 9 regions for analyses, training and public events
- + Exchange of good practice via a travelling exhibition

**EU support (ERDF)** ..... of over € 1,870,000

**Duration** ..... 09.2009 - 12.2012

## Alpine Building Culture and Ecology

### Partners

Handwerkskammer für München und Oberbayern .....	DE
BAU Akademie Lehrbauhof Salzburg .....	AT
Energieinstitut Vorarlberg .....	AT
Research Studios Austria .....	AT
Bayerische Architektenkammer .....	DE
Chambre de Commerce et d'Industrie de la Drôme .....	FR
Ente Regionale per i Servizi all'Agricoltura e alle Foreste - ERSAF Lombardia .....	IT
Regione Autonoma Valle d'Aosta .....	IT
Regione del Veneto .....	IT

[www.alpine-space.eu/alpouse](http://www.alpine-space.eu/alpouse)

AlpHouse.eu  
tradition | competence | innovation



EUROPEAN TERRITORIAL COOPERATION





investing in your future



Greetings from the  
Alpine Space Programme  
.....  
**COMUNIS**

# COMUNIS

Communities in the Alps often have little land available for commercial site development due to natural restrictions, and the few areas that remain are highly sought-after due to the diverse utilisation demands.

COMUNIS has contributed to the setting-up of a common strategic perspective on 'commercial location development' by supporting the creation and development of municipality networks. In practice, the project tackled the problem of uncoordinated and individual commercial development in 7 pilot projects. Some of these produced permanent cooperation structures between the participating municipalities.

## Key achievements

- + Legal cooperation agreements between municipalities in 3 pilot regions
- + Guidelines: practical handbook for inter-municipal cooperation
- + Installation of management structures in selected pilot areas

EU support (ERDF) ..... of over € 1,377,000

Duration ..... 07.2009 - 06.2012

## Inter-municipal cooperation for the strategic steering of SME-oriented location development in the Alpine Space

### Partners

HES-SO Valais, Institut Economie et Tourisme .....	CH
Chambre de Commerce et d'Industrie de Lyon .....	FR
Regionalentwicklung Vorarlberg .....	AT
Association Suisse pour le Service aux Régions et Communes .....	CH
Canton du Valais .....	CH
Bosch & Partner GmbH .....	DE
Stadt Sonthofen .....	DE
EURAC Accademia Europea di Bolzano .....	IT
Langhe Monferrato Roero soc.cons. a.r.l. ....	IT
Ministero dell'Ambiente, della Tutela del Territorio e del Mare .....	IT
BSC, Poslovno podporni center, d.o.o., Kranj .....	SI

[www.alpine-space.eu/comunis](http://www.alpine-space.eu/comunis)



EUROPEAN TERRITORIAL COOPERATION



investing in your future



Greetings from the  
Alpine Space Programme  
.....  
**DEMOCHANGE**

 The programme is co-funded  
by the European Regional  
Development Fund

# DEMOCHANGE

Demographic change is a major driving force throughout Europe. People's needs vary, according to age and location in the mountainous areas.

DEMOCHANGE addressed the challenges of a changing population structure in the Alpine region and identified local key issues in 10 model regions. Through public participation, the project created a new governance process to develop adaptation strategies with regard to spatial planning and regional development. Twenty seven pilot actions tested the implementation of these strategies. Transnational roadmaps and policy recommendations in the Alpine Space have been developed.

## Key achievements

- + Strategies to cope with demographic change in the Alpine Space
- + Regional reports for the model regions with adaptation strategies
- + [www.swottool.de](http://www.swottool.de) to prepare SWOT analyses

EU support (ERDF) ..... of over € 1,903,000

Duration ..... 10.2009 - 11.2012

## Demographic change in the Alps: adaptation strategies for spatial planning and regional development

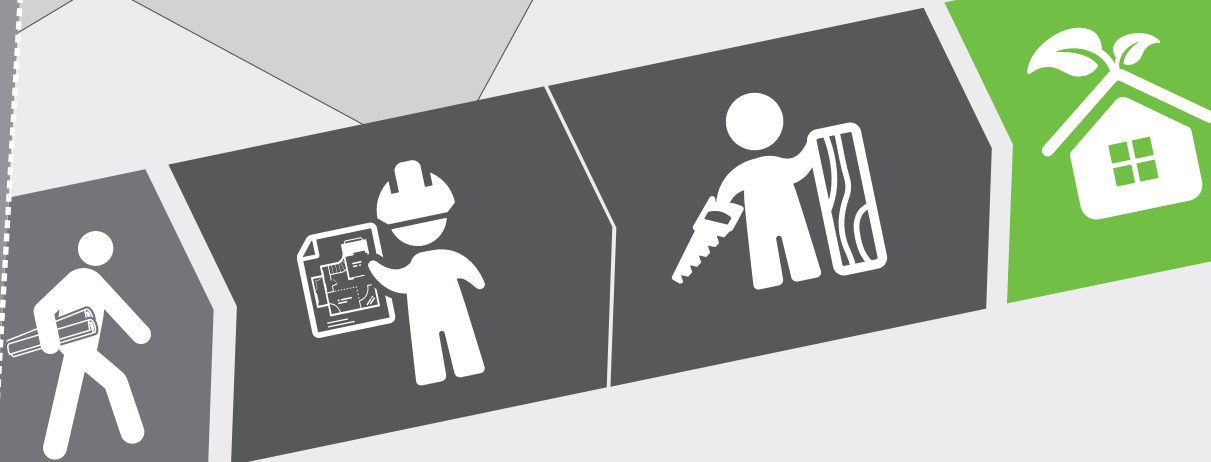
### Partners

Hochschule für Angewandte Wissenschaften - FH München .....	DE
Amt der Salzburger Landesregierung .....	AT
Universität Salzburg .....	AT
Hochschule Luzern - Soziale Arbeit .....	CH
Interface Institut für Politikstudien .....	CH
Zentralschweizer Konferenz der Volkswirtschaftsdirektoren .....	CH
Landkreis Oberallgäu .....	DE
Landratsamt Garmisch-Partenkirchen .....	DE
Libera Università di Bolzano, Freie Universität Bozen .....	IT
Regione Autonoma Valle d'Aosta .....	IT
UNCEN - Unione Nazionale Comuni Comunità Enti Montani Piemonte ....	IT
Razvojna agencija Zgornje Gorenjske .....	SI
Urbanistični inštitut Republike Slovenije .....	SI

[www.alpine-space.eu/demochange](http://www.alpine-space.eu/demochange)



investing in your future



Greetings from the  
Alpine Space Programme

**ENERBUILD**



The programme is co-funded  
by the European Regional  
Development Fund

# ENERBUILD

40% of CO<sub>2</sub> emissions come from the construction sector. Energy efficient construction is therefore a key factor in climate change prevention.

ENERBUILD focused on strengthening SMEs in the building sector and on developing tools relating to the energy production of buildings. Craftsmen and architects received training on new techniques for ecological building. Developments have included the integration of photovoltaics in buildings, a participation model on green power plants for local supply and concepts for heat supply. A transnational standardisation initiative for the assessment of ecological construction is on-going.

## Key achievements

- + 3 publications on examination and assessment of buildings
- + 4 publications and 1 tool on energy efficiency
- + Publications and tools on E-Producing (4), innovation (1) and education (1)

**EU support (ERDF)** ..... of over € 2,134,000

**Duration** ..... 07.2009 - 06.2012

## ENERgy Efficiency and Renewable Energies in the BUILDing Sector

### Partners

Regionalentwicklung Vorarlberg .....	AT
Energieagentur Obersteiermark .....	AT
NENA - Network Enterprise Alps .....	AT
Tiroler Zukunftsstiftung .....	AT
Zentralschweizer Volkswirtschaftsdirektorenkonferenz vertreten durch das Justiz- und Sicherheitsdepartement des Kantons Luzern .....	CH
Fachhochschule Rosenheim .....	DE
RAEE Rhônalpénergie-Environnement .....	FR
EURAC Accademia Europea di Bolzano .....	IT
Provincia Autonoma di Trento .....	IT
Provincia di Alessandria .....	IT
Regione Piemonte .....	IT
TIS Techno Innovation South Tyrol .....	IT
Posoški razvojni center .....	SI

[www.alpine-space.eu/enerbuild](http://www.alpine-space.eu/enerbuild)

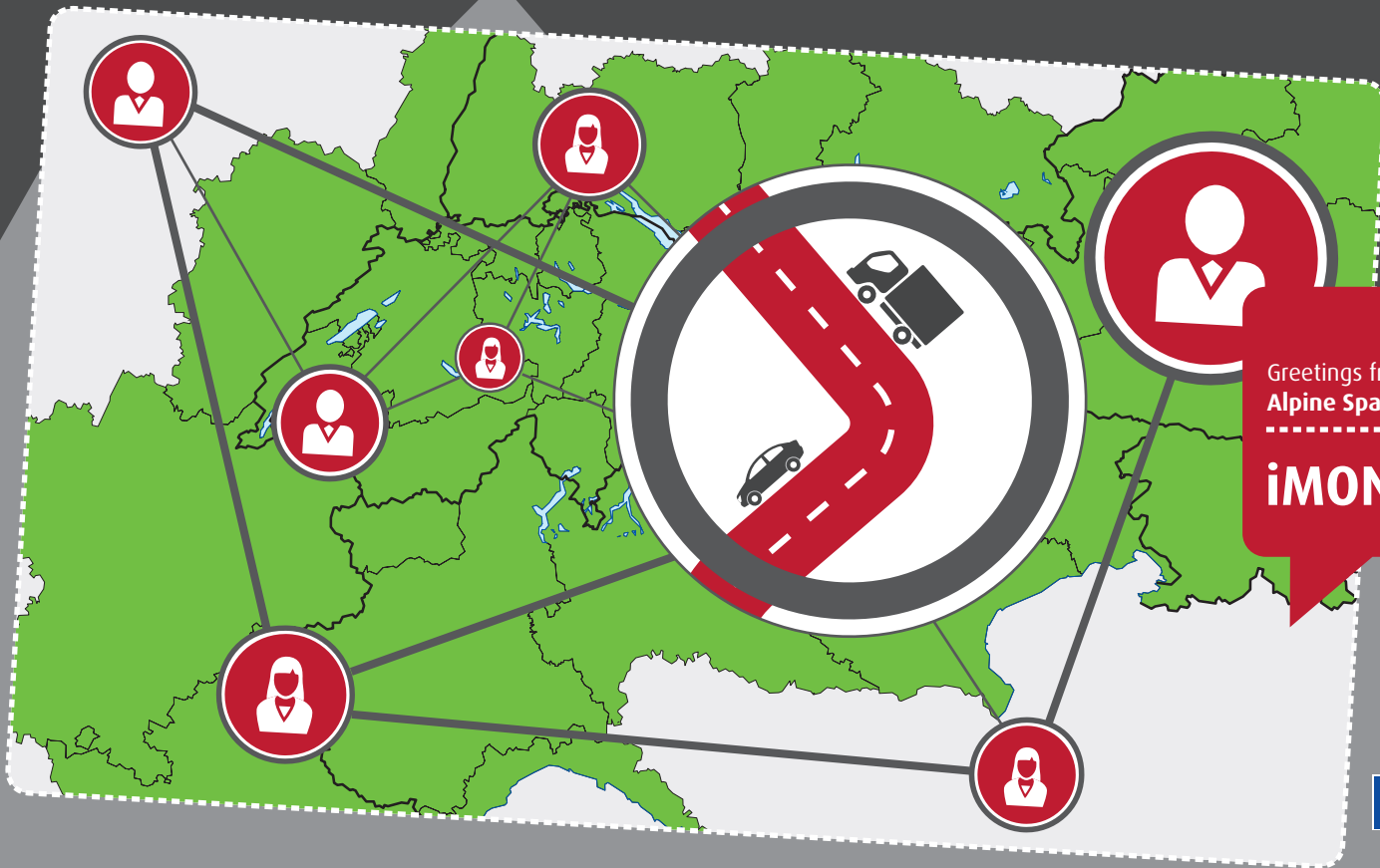
# ENERBUILD



EUROPEAN TERRITORIAL COOPERATION



investing in your future



Greetings from the  
Alpine Space Programme

**iMONITRAF!**



The programme is co-funded  
by the European Regional  
Development Fund

# iMONITRAF!

The increase of transalpine traffic requires coordinated measures by Alpine regions to reduce transport related impacts and limit distributional effects between transport corridors. iMONITRAF! has developed monitoring and evaluation instruments (DPSIR-system). A "Best Practice Guide" presents existing regional measures and their effectiveness. The project also developed "decision-making-aids" to help transfer best measures to other regions. A report on "Innovative Approaches" gives recommendations for encouraging the use of technologies and potential steering instruments for transalpine road freight. Most project partners and additional organisations agreed to carry on with the cooperation in the form of a coordination point for at least 4 years after the end of the EU co-funding.

## Key achievements

- + Common transport strategy & political network of Alpine regions
- + WebGIS database with 12 core indicators
- + Decision-making tool with policy scenarios

**EU support (ERDF)** ..... of over € 1,016,000

**Duration** ..... 07.2009 - 06.2012

## Implementation of MONITRAF - Monitoring of road traffic related effects in the Alpine Space and common measures

### Partners

Zentralschweizer Regierungskonferenz der Kantone Luzern, Uri, Schwyz, Obwalden, Nidwalden, Zug .....	CH
Amt der Tiroler Landesregierung .....	AT
Cantone Ticino .....	CH
Région Rhône-Alpes .....	FR
ARPA Friuli Venezia Giulia - Agenzia Regionale per la Prevenzione e Protezione Ambientale .....	IT
ARPA Piemonte - Agenzia Regionale per la Prevenzione e Protezione Ambientale .....	IT
ARPA Valle d'Aosta - Agenzia Regionale per la Prevenzione e Protezione Ambientale .....	IT
Autonome Provinz Bozen - Südtirol / Provincia Autonoma di Bolzano - Alto Adige .....	IT
EURAC Accademia Europea di Bolzano .....	IT
Regione Autonoma Valle d'Aosta .....	IT

[www.alpine-space.eu/imonitraf](http://www.alpine-space.eu/imonitraf)

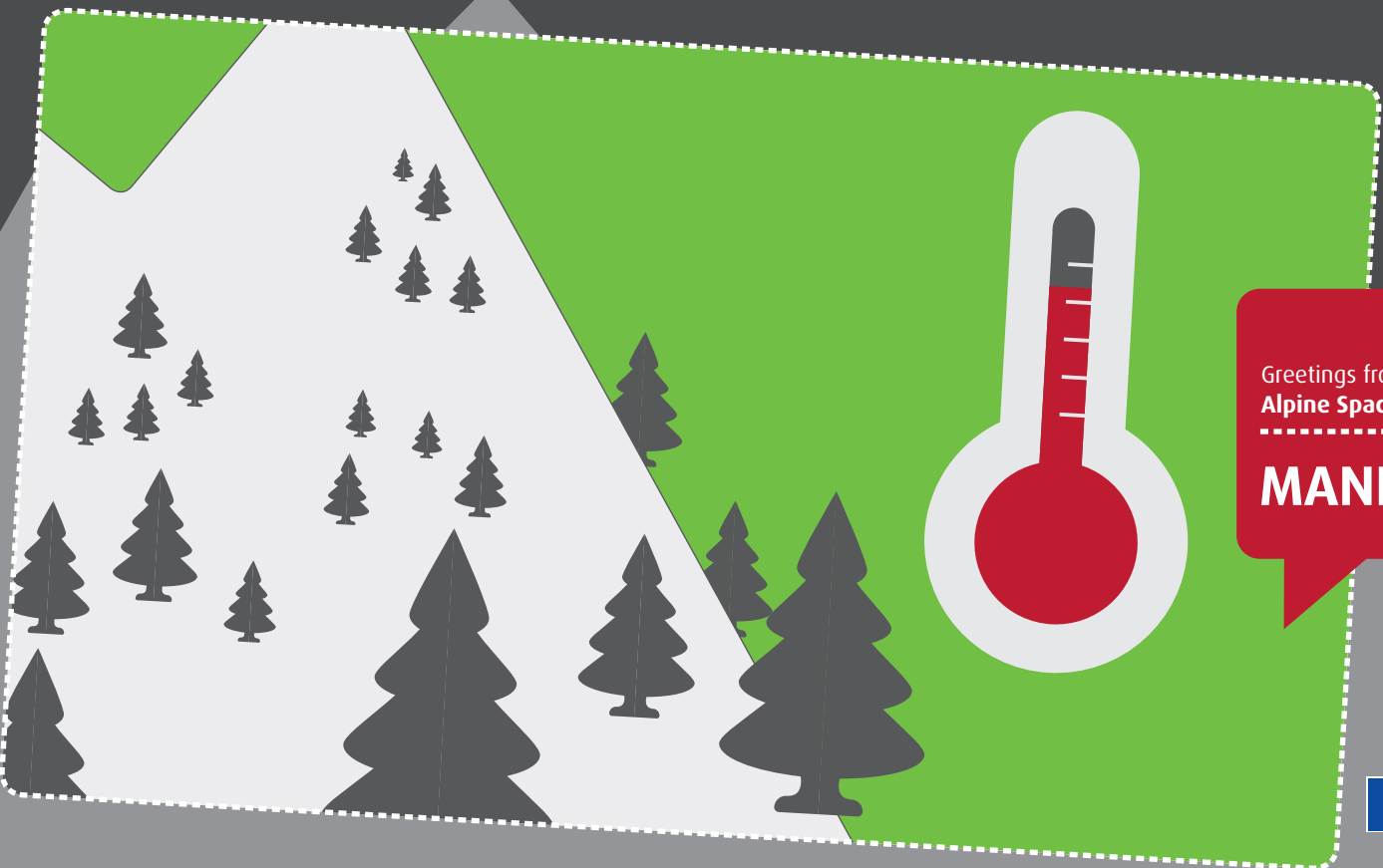


EUROPEAN TERRITORIAL COOPERATION





investing in your future



Greetings from the  
**Alpine Space Programme**

**MANFRED**



The programme is co-funded  
by the European Regional  
Development Fund

# MANFRED

## Management strategies to adapt Alpine Space forests to climate change risks

Natural environments like forests are the first to experience the direct impacts of climate change. Transnational common solutions are needed in the Alpine Space.

MANFRED brought forestry practitioners together throughout the Alps to share their tactics for dealing with extreme events. Together, they developed adaptive forest management strategies and tools to support on-the-ground forestry practice. They also implemented improved management practices in transnational case study areas. Finally, the project downscaled global climate models to the Alpine regional level.

### Key achievements

- + The 22nd Century book on forestry in the Alps
- + Handbook on stress events in the Alpine forests
- + Online database for extreme events

EU support (ERDF) ..... of over € 2,412,000

Duration ..... 08.2009 - 07.2012

### Partners

Forstliche Versuchs- und Forschungsanstalt Baden-Württemberg .....	DE
AIT Austrian Institute of Technology GmbH .....	AT
Bundesforschungs- und Ausbildungszentrum für Wald, Naturgefahren und Landschaft .....	AT
Stand Montafon - Forstfonds .....	AT
Bundesamt für Umwelt (BAFU) .....	CH
Eidgenössische Forschungsanstalt für Wald, Schnee und Landschaft, WSL .....	CH
Bayerische Landesanstalt für Wald und Forstwirtschaft .....	DE
IRSTEA, (ex-Cemagref) groupement de Grenoble .....	FR
Office National des Forêts .....	FR
Ente Regionale per i Servizi all'Agricoltura e alle Foreste - ERSAF Lombardia .....	IT
Ministero dell'Ambiente, della Tutela del Territorio e del Mare .....	IT
Regione Autonoma Valle d'Aosta .....	IT
Università Cattolica del Sacro Cuore .....	IT
Gozdarski inštitut Slovenije .....	SI
Zavod za gozdove Slovenije .....	SI

[www.alpine-space.eu/manfred](http://www.alpine-space.eu/manfred)



investing in your future



Greetings from the  
**Alpine Space Programme**

**PARAMount**



The programme is co-funded  
by the European Regional  
Development Fund

# PARAMount

## imPROved Accessibility: Reliability and security of Alpine transport infrastructure related to mountainous hazards in a changing climate

As a result of climatic trends, the vulnerability of transport infrastructure to natural hazards has increased, but transport and accessibility need to be secure and ensured in the Alps.

Within the framework of PARAMount, existing tools and practices for assessing avalanches, rock fall and debris flow were improved and tools on the visualization of natural hazard impacts were developed and assessed. In addition, hazard early warning systems were installed in the pilot areas, increasing the reliability of risk forecast. The project established several risk dialogue groups with experts across the whole Alpine region.

### Key achievements

- + Risk Management and Implementation Handbook
- + Decision support tool for natural hazards
- + Forecast system guidelines - debris flow

EU support (ERDF) ..... of over € 2,033,000

Duration ..... 09.2009 - 11.2012

### Partners

Bundesministerium für Land- und Forstwirtschaft, Umwelt und Wasserwirtschaft .....	AT
Bundesforschungs- und Ausbildungszentrum für Wald, Naturgefahren und Landschaft .....	AT
ÖBB-Infrastruktur AG, Strecken- und Bahnhofsmanagement .....	AT
Bundesamt für Umwelt (BAFU) .....	CH
Eidgenössische Forschungsanstalt für Wald, Schnee und Landschaft, WSL .....	CH
IRSTEA, (ex-Cemagref) groupement de Grenoble .....	FR
ARPA Piemonte- Agenzia Regionale per la Prevenzione e Protezione Ambientale .....	IT
ARPA Veneto- Agenzia Regionale per la Prevenzione e Protezione Ambientale .....	IT
Autonome Provinz Bozen - Südtirol / Provincia Autonoma di Bolzano - Alto Adige .....	IT
Provincia Autonoma di Trento .....	IT
Università di Padova .....	IT
Podjetje za urejanje hudournikov d.d. ....	SI
Univerza v Ljubljani .....	SI

[www.alpine-space.eu/paramount](http://www.alpine-space.eu/paramount)



PARAMount



CLIMATE CHANGE



COMPETITIVENESS & INNOVATION OF SMES



INCLUSIVE GROWTH



LOW-CARBON ECONOMY AND ENERGY EFFICIENCY



RESOURCE EFFICIENCY AND ECOSYSTEM MANAGEMENT



SUSTAINABLE TRANSPORT & MOBILITY

EUROPEAN TERRITORIAL COOPERATION



investing in your future



Greetings from the  
**Alpine Space Programme**

**SHARE**



The programme is co-funded  
by the European Regional  
Development Fund

# SHARE

Hydropower (HP) is the most important renewable resource for electricity production in the Alpine area, but creates serious environmental impacts. RES-e directives promote the production of renewable electricity, whereas the Water Framework Directive obliges Member States to reach a “good” ecological status of water bodies, thus limiting the exploitation of hydropower.

In 11 pilot areas, the SHARE project has developed, promoted and tested a decision support system for merging river ecosystem services and HP requirements, on an unprejudiced basis, using a Multi Criteria Analysis (MCA) methodology, which is adaptable to local cases.

## Key achievements

- + Toolkit for the planning and assessing of HP facilities taking into account ecosystems services
- + Guidelines on the integration of MCA procedures in normative texts
- + Indicators database to evaluate the effect of HP on water bodies

**EU support (ERDF)** ..... of over € 2,052,000

**Duration** ..... 08.2009 - 07.2012

## Balancing river ecosystems and hydropower requirements

### Partners

ARPA Valle d'Aosta - Agenzia Regionale per la Prevenzione e Protezione Ambientale .....	IT
Amt der Steiermärkischen Landesregierung .....	AT
Technische Universität Graz .....	AT
Universität Innsbruck .....	AT
Universität Stuttgart .....	DE
AEM, Association Européenne des Elus de Montagne .....	FR
GERES, Groupe Energies Renouvelables, Environnement et Solidarités .....	FR
Université Joseph Fourier Grenoble .....	FR
ARPA Veneto - Agenzia Regionale per la Prevenzione e Protezione Ambientale .....	IT
Regione Piemonte .....	IT
RSE S.p.A., Ricerca Sistema Energetico .....	IT
E-zavod .....	SI
Univerza v Ljubljani .....	SI

[www.alpine-space.eu/share](http://www.alpine-space.eu/share)



EUROPEAN TERRITORIAL COOPERATION



investing in your future



Greetings from the  
**Alpine Space Programme**

**SILMAS**



The programme is co-funded  
by the European Regional  
Development Fund

# SILMAS

## Sustainable Instruments for Lakes Management in the Alpine Space

Alpine lakes are attractive for a wide range of sectors, from tourism to industry, and provide a privileged location for residence. However, this particularly fragile natural environment, its water resources and its biodiversity must all be protected.

SILMAS developed a range of tools for practitioners and policy-makers to ensure the sustainable management of Alpine lakes and their catchment areas. At the same time, the project focused some of its activities on school children and tourists, providing a wealth of educational material for all target audiences.

### Key achievements

- + 7 guideline documents on lake management
- + Web-GIS platform: "Alpine lakes database"
- + "Lake Adventures", an educational virtual software

EU support (ERDF) ..... of over € 2,478,000

Duration ..... 09.2009 - 08.2012

### Partners

Région Rhône-Alpes .....	FR
Amt der Kärntner Landesregierung .....	AT
Joanneum Research Forschungsgesellschaft mbH .....	AT
Universität Salzburg .....	AT
Institut für Seenforschung Landesanstalt für Umwelt, Messungen und Naturschutz Baden-Württemberg .....	DE
Comité intersyndical pour l'assainissement du lac du Bourget .....	FR
Région Provence-Alpes-Côte d'Azur .....	FR
Syndicat Mixte du lac d'Annecy .....	FR
Agenzia Provinciale per la Protezione dell'Ambiente di Trento .....	IT
ARPA Piemonte - Agenzia Regionale per la Prevenzione e Protezione Ambientale .....	IT
Distretto Turistico dei Laghi .....	IT
Ente Regionale per i Servizi all'Agricoltura e alle Foreste - ERSAF Lombardia .....	IT
Regione Lombardia .....	IT
Nacionalni inštitut za biologijo .....	SI
Univerza v Novi Gorici .....	SI

[www.alpine-space.eu/silmas](http://www.alpine-space.eu/silmas)

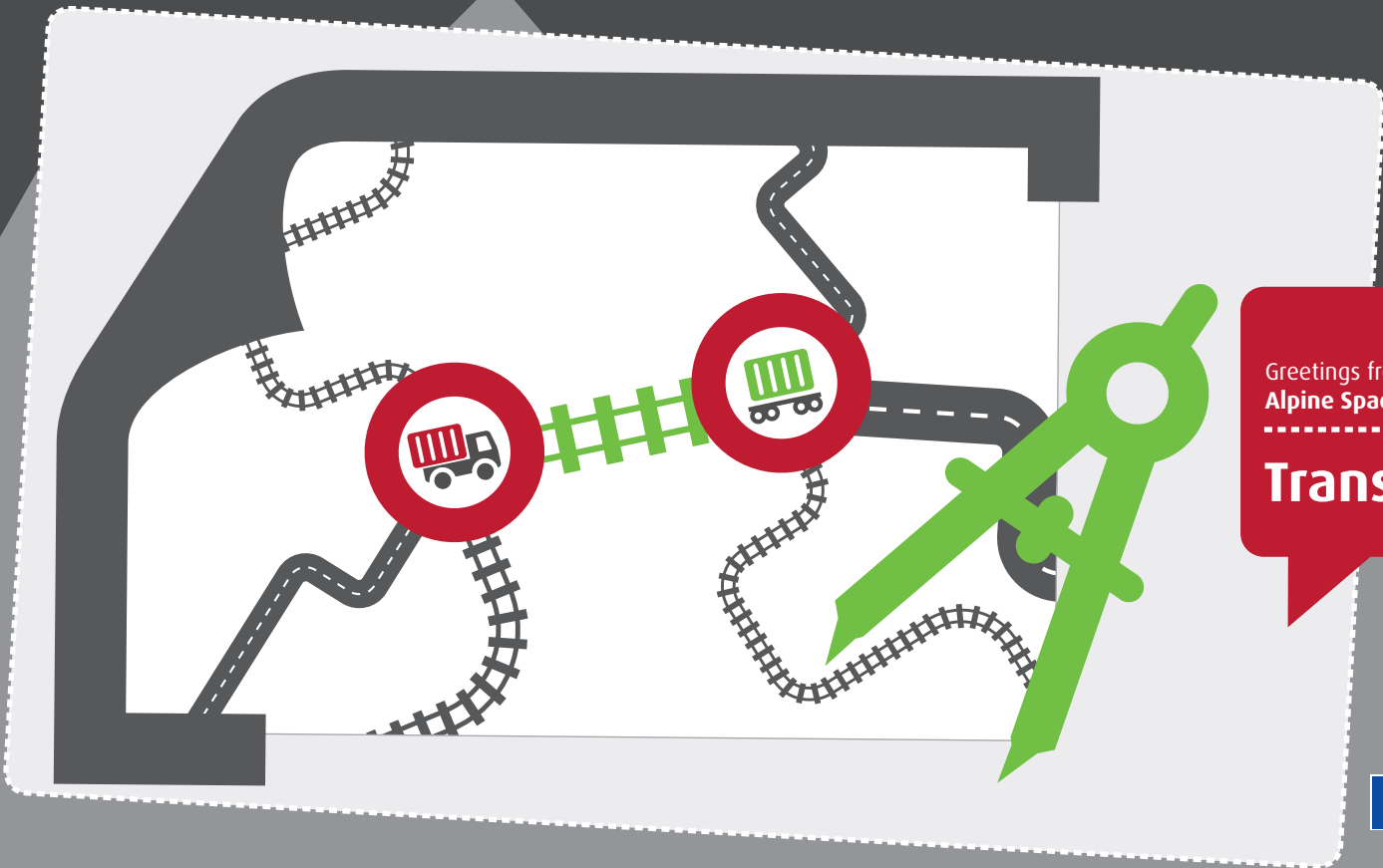


EUROPEAN TERRITORIAL COOPERATION





investing in your future



Greetings from the  
**Alpine Space Programme**

**Transitects**



The programme is co-funded  
by the European Regional  
Development Fund

# Transitects

## Transalpine Transport Architects

The Alps are both a transit area with growing traffic and an obstacle in the European transport network.

Transitects developed attractive rail alternatives to mitigate the negative effects of traffic, taking important steps to strengthen the attractiveness and functionality of the Alpine railway system for freight transport. The project devised numerous measures for the development of transalpine pilot products for combined transport. It also developed pilot projects for unaccompanied and accompanied train services, as well as concepts for improving the functionality of intermodal nodes.

### Key achievements

- + 13 concrete ideas for unaccompanied train services
- + 4 concepts for accompanied transport services
- + 3 concepts for functionality improvements of intermodal nodes

**EU support (ERDF)** ..... of over € 2,439,000  
**Duration** ..... 07.2009 - 09.2012

### Partners

Deutscher Verband für Wohnungswesen, Städtebau und Raumordnung e. V.	DE
Amt der Kärntner Landesregierung .....	AT
Amt der Salzburger Landesregierung .....	AT
Amt der Tiroler Landesregierung .....	AT
Bundesministerium für Verkehr, Innovation und Technologie .....	AT
Gemeinsame Landesplanungsabteilung der Länder Berlin und Brandenburg	DE
Regionalverband Donau-Iller .....	DE
Wirtschaftsförderung Region Stuttgart GmbH .....	DE
ALOT scarl - Agenzia della Lombardia orientale per i trasporti e la logistica	IT
EURAC Accademia Europea di Bolzano .....	IT
Ministero dell'ambiente e della tutela del territorio e del mare .....	IT
Regione Autonoma Friuli Venezia Giulia .....	IT
Regione Lombardia .....	IT
Regione del Veneto .....	IT
Unioncamere del Veneto – Eurosportello del Veneto .....	IT
Ministrstvo za infrastrukturo in prostor .....	SI

[www.alpine-space.eu/transitects](http://www.alpine-space.eu/transitects)



- CLIMATE CHANGE
- COMPETITIVENESS & INNOVATION OF SMES
- INCLUSIVE GROWTH
- LOW-CARBON ECONOMY AND ENERGY EFFICIENCY
- RESOURCE EFFICIENCY AND ECOSYSTEM MANAGEMENT
- SUSTAINABLE TRANSPORT & MOBILITY

